

Buses

If you use the bus, check with your bus operator to find out if there are any alterations to the service during these roadworks. You'll find all Surrey's operators and their websites listed here:

www.surreycc.gov.uk/busoperators

Bogus callers

We do not do private work. If anyone offers to do private work please contact Surrey Trading Standards on 0845 404 05 06 or visit

www.surrey.gov.uk/stopcoldcallers

Who is doing this work?

The council's contractor Kier will be carrying out these works on our behalf.

Contact us



www.surreycc.gov.uk/highways



0300 200 1003 (Monday to Friday 8am to 6pm)



Contact Centre, County Hall, Penrhyn Road,
Kingston upon Thames, Surrey KT1 2DN

Customer feedback

Your feedback on how these works are carried out will help us to continue to improve. You can do this by filling out the enclosed freepost feedback document using reference **WCT – 5007311**

We apologise for any delays this work causes and thank you for your cooperation and patience.

The image shows a roadwork sign with a black background and yellow text. At the top left, there is a blue tag with a white outline of a road and the text 'IMPROVING OUR ROADS' and 'Surrey'. At the top right, there is a blue circular logo with a white tree and the word 'SURREY'. The main text is 'IMPROVING SAFETY ON SURREY'S ROADS' in large, bold, yellow and white letters. Below this, there is a white horizontal line. At the bottom, there are three thick yellow horizontal stripes. The text at the bottom right reads: 'Advanced warning Safety improvement works: Lion Lane, Haslemere Friday 31st March 2017 For 1 day'.

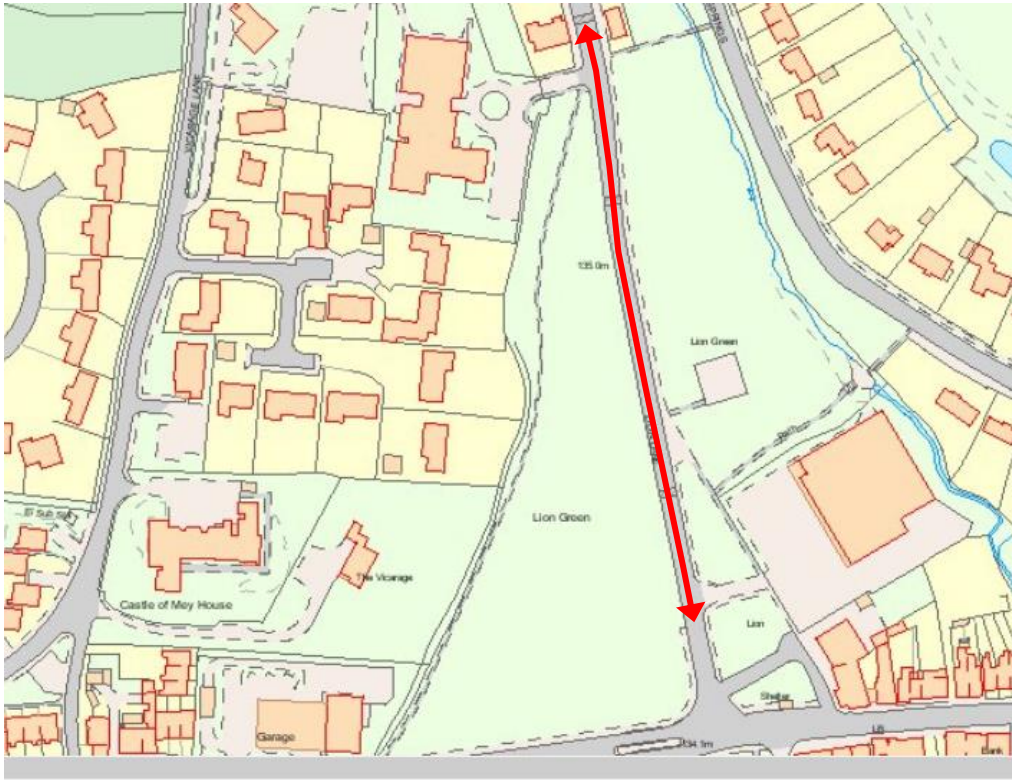
What we are doing

This is a scheme to install new a new zebra crossing, signs and anti-

Start date:
Friday 31st March 2017
1 Day Road closure
Duration:
For 1 Day

Please look out for advance warning signs on site for any date changes or check www.roadworks.org

skid surface.



Extent of works:



Information for residents and businesses

This work will be carried out on Friday 31 March using a road closure. The closure will be in place from 09.30 to 14.30 and then from 18.30 to 22.00. When the road is closed a signed diversion route will be provided. Parking adjacent to Lion Green will be restricted during the working hours.

The red arrow on the page opposite displays the area where we will be working and the extent of the closure.

Access

We will make sure you can get to and from your house or business when it is safe to do so. Please talk to a member of our staff on site if you need help – talking to our staff can solve most issues.

Delays in work

Our work is sometimes delayed by bad weather. We will keep you updated on any changes via the advance warning signs.

Parking

It is essential to keep the road free from parked vehicles. Please park somewhere else otherwise your vehicle may be towed away.

Noise

There will be some noise but we will try to keep this to a minimum.

Has one of our signs been left behind?

Please help us by reporting it via – www.RemoveThisSign.com.